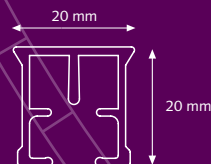


## PRODUCT INFORMATION

- Smooth, belt driven motorized curtain track system.
- High Frequency Technology.
- Can be operated by Wall Switch, Remote Control (high frequency) or Time Switch (high frequency).
- Silent motor, speed: 15 cm/sec.
- Easy to connect to Building Automation systems.
- Bi-directional Bus-controller available, which enables data feedback communication. Optional.
- Available in 30, 45 and 60 Watt;
- Motor pulley connects motor and FMS track.
- All KS brackets applicable.
- Torque: 0,8 Nm (30 Watt), 1.2 Nm (45 Watt), 1.6 Nm (60 Watt).
- Noise level FMS motor < 42 dB(A)
- Dimensions 30 Watt Motor: 60 x 50 x 200 mm  
 (2.36 x 1.97 x 7.87")  
 45 Watt Motor: 60 x 50 x 230 mm  
 (2.36 x 1.97 x 9.06")  
 60 Watt Motor: 60 x 50 x 230 mm  
 (2.36 x 1.97 x 9.06")

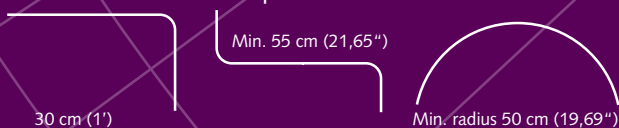
## SPECIFICATIONS TRACK

- Weight: 303 gr/mtr (3,25 ounce/ft.)
- Aluminium Extrusion
- Size: 20 x 20 mm (0.79 x 0.79")
- Scale 1:1



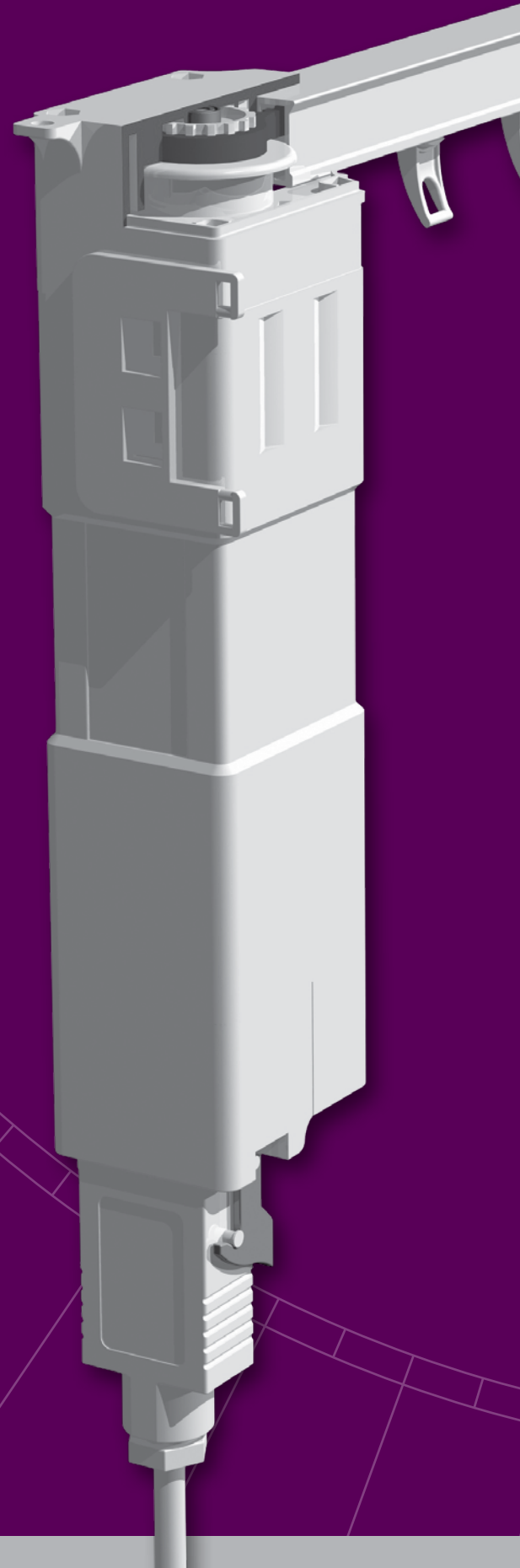
## BENDING / CURVING

The motor can be used in a track with one or two bends of 90 degrees. The track can be bent and reversed bent with a radius of 20 cm (8"). Continuous curving can be done with the electric powered bender.



## TANDEM APPLICATION

More information is available on request.





## CONTROL OPTIONS

### HIGH FREQUENCY



Wireless with Multi remote and receiver. The Multi remote control contains 15 channels and also has a timer function.

### DOMOTICS CONTROL



Wired or wireless Domotics is possible. Consult Forest for more information.

### SWITCH CONTROL



For wiring and connection instructions, consult User/Installation Manual.

### BUILDING AUTOMATION



The FMS can be connected to any Building Automation system, by relay control. Optionally available is a Bi-directional Bus-controller, which enables data feedback communication with for instance AMX/Crestron Automation systems.

### HOTEL CONTROL



The FMS can be connected to any Hotel Automation system, by relay control. Optionally available is a Bi-directional Bus-controller, which enables data feedback communication with for instance AMX/Crestron Automation systems.

More detailed schedules with further user options are mentioned in the separate FMS application datasheet. Available on request or on our website.

## FOREST PARTNERSHIPS



[www.amx.com](http://www.amx.com)  
In Concert Partner.



[www.knx.nl](http://www.knx.nl)  
KNX partner



[www.z-wave.com](http://www.z-wave.com)  
Z Wave alliance partner



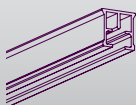
[www.crestron.com](http://www.crestron.com)  
I2P partner



[www.smart-homes.nl](http://www.smart-homes.nl)  
Smart homes partner

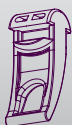
FMS can easily be applied in current Building  
and Home Automation systems.

## FMS TRACK



Aluminium extrusion, powder coated, lubricated. Available lengths: 5,80 m (19') 10/bundle  
7 m (23') 5101001580  
5101001700

## FMS CARRIER



"Clickable", offset, constructed of UV resistant plastic. 10 Carriers on a break-away strip. Can be clicked in after installation. Colours: 01, 02, 03, 05, 06 250/box  
25101..000

## FMS TRANSPORT BELT



Toothed belt, to be installed inside the FMS Track. 100 mtr/roll  
5105501000

## FMS/TCS MASTER CARRIER



**UNDERLAP R/L** 15/box  
Multifunctional – arm is reversible - will slide trough curves, will fit stiffeners. 5215801000

## FMS/TCS MASTER CARRIER



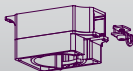
**OVERLAP R/L** 15/box  
Multifunctional – arm is reversible - will slide trough curves, will fit stiffeners. 5215901000

## FMS MASTER CARRIER



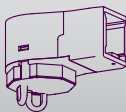
**UNDERLAP SINGLE R/L** 15/box  
Multifunctional – arm is reversible - will slide trough curves. 3016001000

## FMS MOTOR PULLEY



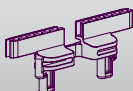
Connects motor with FMS Track. 1/box  
5103011000

## FMS RETURN PULLEY



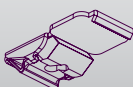
Reverses the transport belt in the FMS Track. 1/box  
5103011100

## FMS CONNECTOR



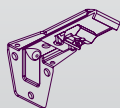
Connects the Master Carrier with the transport belt. 50/box  
5103011500

## SMART KLICK CEILING BRACKET



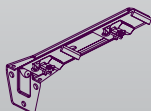
"Klicks" onto track, powder coated. 100/box  
1018201000

### ADJUSTABLE WALL BRACKET SINGLE



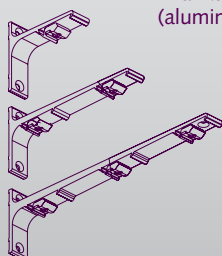
Smart Klick, adjustable single 100/box  
from 7,5 cm (3") to 1020801115  
11,5 cm (4,5").

### ADJUSTABLE WALL BRACKET DOUBLE



Smart Klick, adjustable double 50/box  
from 6,5 cm (2,5") to 1020801195  
10 cm (4") + 15 cm (6") to 19,5 cm (7,5").

### ALUMINIUM WALL BRACKET



Thanks to shape and material 1020301.....  
(aluminium), very stable.

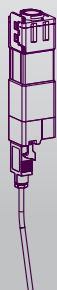
7,5 cm single (3") 20/box  
10 cm single (4") 20/box  
15 cm double (6") 15/box  
20 cm double (8") 15/box  
25 cm triple (10") 10/box

### FMS BENDING STRIP



For FMS Track: 1/set  
90 cm (3') 5160100000  
7 mtr (23') 5160600000

### FMS MOTOR



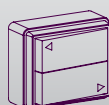
**30 Watt available:** 1 pc/box  
230 Volt 5101001030  
115 Volt 5101011030

**45 Watt available:**  
230 Volt 5101001045  
115 Volt 5101011045

**60 Watt available:**  
230 Volt 5101001060  
115 Volt 5101011060

Tandem Motor 5101001088

### FOREST WALL SWITCH



To operate the curtain by wall 1/box  
switch. Can operate one motor only. 5201001910  
*Dimension: 6,5 x 5,5 x 2,7 cm*  
(2,6 x 2,2 x 1,1")

### MULTI RECEIVER/WALL SWITCH BCS/FMS



Receiver to be used with 1/each  
Multi remote control. 5104011500

*Dimension: 8,5 x 8,5 x 3,5 cm.*

### MULTI REMOTE CONTROL



15-channel remote control. 1/each  
Including a timer function and wall mount. 5201001460  
White 5201006460  
Black

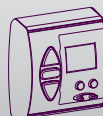
### MULTI WIRELESS WALLSWITCH



2-channel wall switch in 1/each  
combination with Multi receiver 5201001470

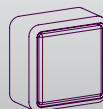
*Dimension: 8,5 x 8,5 x 1 cm.*

### SOMFY TIME CLOCK



Somfy RF time clock, two 1/box  
time periods recordable. Must be ordered in 5104011405  
combination with Somfy Receiver.

### SOMFY RECEIVER



Receiver (high frequency), to 1/each  
be used with Somfy remote control. 5104011410

*Dimension: 8 x 8 x 5 cm.*

### SOMFY REMOTE CONTROL



High frequency 4-channel 1/each  
remote control. 5104011400

### FOREST LUBRICANT



To lubricate components 1/box  
during assembly. 5109010000

### DISTRIBUTOR: